

Understanding your Pepco Bill: An Overview for Commercial Customers



September 30, 2009

Karen Lefkowitz

Director, Customer Relations

Typical Consolidated Commercial Bill With 3rd Party Supplier:

- Supplier Contracts May Require Separate Billing from Pepco (Dual Billing)
- Presently 19% Dual Billing in DC and 33% in MD For Commercial Accounts



Account No: 9999 9999 99 Page: 1 of 3
 Bill Issue Date: Jan 19, 2001

A.N.Y. Company
 Suite 484
 484 Any Street
 Anywhere, MD 20202

Service Period: Dec 11 to Jan 14, 2001
 Service Address: Suite 484
 484 Any Street

Pepco Telephone Contacts: Available Anytime (Cualquier Hora)
 Billing Inquiries/ Service Information 202-833-7500
 Power Outages 1-877-737-2662
 Life Threatening Emergencies 202-872-3432
 Hearing Impaired (TTY) 202-872-2369
 Habla Espanol 202-872-4641
 Toll-Free Number (Within our service territory) 1-800-424-8028
 Miss Utility (Call before you dig) 1-800-257-7777

**THIS BILL CONTAINS YOUR CHARGES
 FROM BOTH PEPCO AND YOUR
 ELECTRIC ENERGY SUPPLIER.**

Meter Summary

Meter Reading Information					
Meter No. Last Digits	Description	Previous Reading	Present Reading	Multiplier	KWH Used
134U	KWH Meter	27295	27595	100	30000
D 05	On-Peak	9436	9516	100	8000
D 08	Interm. Peak	6977	7047	100	7000
D 11	Off-Peak	10881	11031	100	15000
Total KWH Billed: 30,000		Non-Residential-MGT LV			

The present reading is an actual reading.
 Your next scheduled meter reading is Feb 17, 2001.

Account Summary

Prior Balance Pepco	\$719.32
Payments Received Pepco	\$719.32 CR
Balance Forward Pepco	\$0.00
Current Charges Pepco	\$680.74
Total Pepco	\$680.74
Prior Balance ABC	\$1,109.50
Payments Received ABC	\$1,109.50 CR
Balance Forward ABC	\$0.00
Current Charges ABC	\$1,050.00
Total ABC	\$1,050.00
TOTAL AMOUNT DUE	\$1,730.74

After Feb 9, 2001, a Late Payment Charge of \$10.21 will be added, increasing the amount due to \$1,740.95.

To keep customers informed, over the next four months LINES will briefly explain the costs that go into your bill. Read this month's issue of LINES for more information.

20 - 1503 PLEASE DETACH HERE AND RETURN THIS PART WITH YOUR PAYMENT OR PAY ONLINE AT WWW.PEPCO.COM

Please make your payment payable to Pepco
 Write your Account No. 9999 9999 99 on your payment

AMOUNT PAID

Service Address: Suite 484
 484 Any Street

***** AUTOCARRIER MARKS *****
 A.N.Y. Company
 Suite 484
 484 Any Street
 Anywhere, MD 20202-2000

Due Feb 9, 2001 \$1,730.74
 Due After Feb 9 \$1,740.95

32001072038000000000000674112039700006641009999999999



Account No: 9999 9999 99 Page: 2 of 3
 Bill Issue Date: Jan 19, 2001

Additional Contact Information

PEPCO CUSTOMER SERVICE CENTERS

Washington, DC Hours
 701 Ninth Street, N.W. * 8:30 am - 5:15 pm
 2806 Martin Luther King, Jr. Ave., S.E. † 9:00 am - 5:00 pm

Maryland
 200 West Gads Drive*† 10:00 am - 2:00 pm
 Rockville, Maryland
 8300 Old Marlboro Pike* 10:00 am - 2:00 pm
 Fortoville, Maryland

* After hours deposit boxes available for the payment of bills.
 † Cash payments are not accepted at these locations.

Information regarding rate schedules, including the actual seasonal rate, time of use, customer charge, fuel rate and how to verify the accuracy of your bill will be mailed upon request.

PAYMENTS WRITTEN INQUIRIES
 Pepco Pepco, Correspondence Section
 P.O. Box 97274 701 Ninth Street, NW
 Washington, DC 20090-7274 Washington, DC 20068-0001

Pepco is regulated by the Public Service Commission of the State of Maryland 1-800-492-0474, or 410-767-8000 (outside Maryland.) You may contact the commission if efforts to resolve a dispute with Pepco are unsuccessful.

Pepco's Taxpayer Identification No. 53-0127880
 Visit our website at: www.pepco.com

Account Details

Services by Pepco for Dec 11 to Jan 14, 2001:

Winter rates in effect

Distribution Services:

Customer Charge	26.27
On-Peak Energy	8000 KWH x \$0.00979 78.32
Int-Peak Energy	7000 KWH x \$0.00979 68.53
Off-Peak Energy	15000 KWH x \$0.00979 146.85
Maximum Demand	70.0 KWD 63.17
Conservation Surcharge	at \$0.00328 per KWH 98.40
Franchise Tax (Delivery)	at \$0.00061 per KWH 18.60
Universal Service Charge	20.00
Gross Receipts Tax	at 2.0408000% 10.65
Temp Tax Compliance Surcharge	at \$0.000494 per KWH 13.84
Montgomery Co. Energy Tax	at \$0.0028182 per KWH 84.55
MD Environmental Surcharge	at \$0.00015 per KWH 4.50
	\$635.73

Total Charges - Pepco

Other Services:

CEO Online Monthly Subscription Fee	16.84
Total Charges - Other Pepco Services	\$16.84
Sales Tax	\$28.17

Energy Usage History

	Jan 00	Feb 00	Mar 00	Apr 00	May 00	Jun 00	Jul 00	Aug 00	Sep 00	Oct 00	Nov 00	Dec 00	Jan 01
DAYS	31*	31	29	30	29	28	30	28	31	30	30	32	34
KWH	30800	31200	29000	35300	30000	28900	30000	29100	31000	30100	30700	31700	30000
ON PK	8500	9000	8000	10100	8000	7400	7500	7300	8500	8100	8100	8300	8000
INT PK	7700	7300	6000	9100	7300	7600	7300	7800	7800	7000	7200	8700	7000
OFF PK	14600	14900	15000	16100	14700	13900	14200	14000	14700	14000	14400	14700	15000
KW MAX	77.0	75.0	68.0	71.0	57.0	67.0	66.0	69.0	73.0	76.0	72.0	75.0	70.0
KW ON PK	60.0	58.0	54.0	57.0	49.0	53.0	52.0	56.0	58.0	60.0	57.0	59.0	62.0

* Estimated Reading

Meter Summary

Meter Reading Information					
Meter No. Last Digits	Description	Previous Reading	Present Reading	Multi- plier	KWH Used
367U	Kilowatt Hour Meter	18721	19582	600	516600
368U	Kilowatt Hour Meter	8419	8754	600	201000
D 11	Off Peak	394449	363481	1	363481
D 08	Interm Peak	186035	175224	1	175224
D 05	On Peak	193463	178800	1	178800

Total KWH Billed: 717505

Non-Residential-GT

The present reading is an actual reading.

Your next scheduled meter reading is October 19, 2009.

Energy Usage History

	Sep 08	Oct 08	Nov 08	Dec 08	Jan 09	Feb 09	Mar 09	Apr 09	May 09	Jun 09	Jul 09	Aug 09	Sep 09
DAYS	30	32	29	34	31	30	30	30	29	32	30	29	29
KWH	462279	494557	449230	550845	520938	520637	476977	444719	432399	493500	456105	433956	436668
ON PK	108815	115296	104663	121419	124834	119336	107892	109527	105000	106994	109317	107504	106745
INT PK	114762	121000	109236	121833	123027	121001	111196	116866	113123	115653	114801	111755	112459
OFF PK	238702	258261	235331	307593	273077	280300	257889	218326	214276	270853	231987	214697	217464
KW-MAX	1080.2	1080.2	1172.2	1193.2	1070.2	1134.4	1160.9	1095.8	989.9	1061.3	1014.3	946.7	996.7
KW-ON PK	920.2	920.2	1062.6	1008.4	1061.3	1119.7	1085.4	943.7	907.6	944.2	892.1	808.5	871.1



A PHI Company

Account No:
Bill Issue Date:

Sep 23, 2009

Supplier Contact Information

Pepco Energy Services Inc
PowrChoice
1300 North 17th St, Suite 1600
Arlington VA 22209
800-213-7719
www.pepco-services.com

Account Details (continued)

Generation and Transmission
Services by PowrChoice for Aug 18, 2009 to Sep 18, 2009:

SALES TAX	4481.29
RENEWABLE ENERGY CERTIFICATE - 717,505 KWH TOTA	3228.77
GENERATION - 717,505 KWH TOTAL @ 10.412 CENTS/K	74706.62

Charges This Period PowrChoice **\$82,416.68**

CEO Online

- An online tool to analyze energy usage of one or multiple facilities by using interval data.
- Using interval data, customers can:
 - Compare energy usage among facilities
 - Establish benchmarks for energy use
 - Measure effectiveness of efficiency efforts
 - Download data for further analysis

View Summary Info

Chief Energy Officer - Summary Statistics - Netscape

File Edit View Go Communicator Help

Back Forward Reload Home Search Netscape Print Security Shop Stop

Location: https://epo.energyinteractive.com/pepco/cgi/eponline.exe

Connected to your business | Summary Statistics

CEO
Chief Energy Officer Online

Account #: **123456789**
Description: **Facility 1**

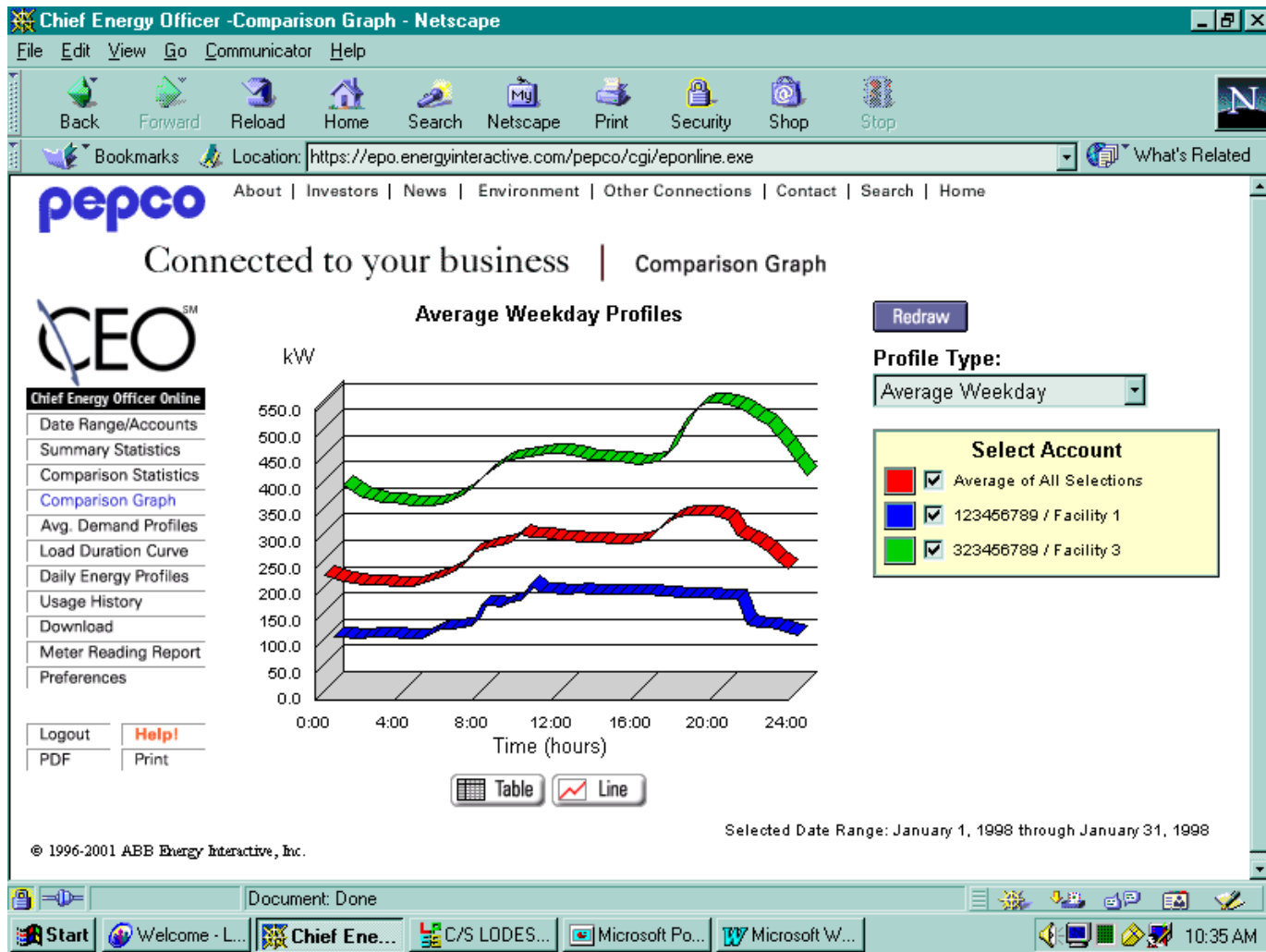
[Graph](#)

Date Range/Accounts	Total Energy Usage (kWh)	65,127
Summary Statistics	Total Weekday Energy Usage (kWh)	47,742
Comparison Statistics	Total Weekend Energy Usage (kWh)	17,386
Comparison Graph	Peak Weekday Demand (kW)	244.4
Avg. Demand Profiles	Peak Weekend Demand (kW)	198.9
Load Duration Curve	Load Factor	35.82%
Daily Energy Profiles	On-Peak - Energy	18,889
Usage History	On-Peak - Maximum Demand	212.6
Download	On-Peak - Maximum Demand Time	01/12/1998 14:00
Meter Reading Report	Mid-Peak - Energy	16,675
Preferences	Mid-Peak - Maximum Demand	244.4
	Mid-Peak - Maximum Demand Time	01/08/1998 08:30
	Off-Peak - Energy	29,564
	Off-Peak - Maximum Demand	220.9
	Off-Peak - Maximum Demand Time	01/15/1998 08:00

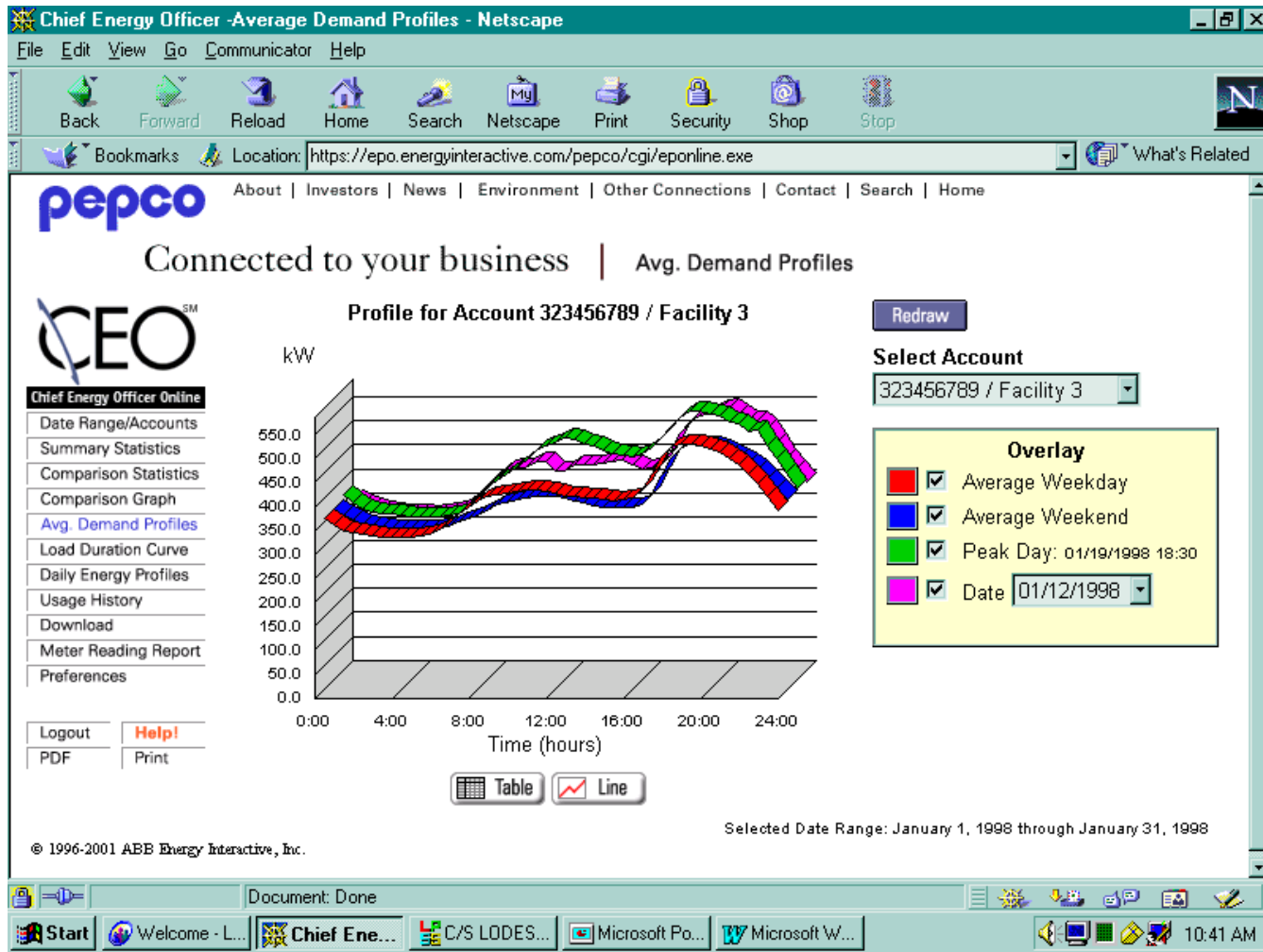
Logout [Help!](#)
PDF [Print](#)

Start Welcome - L... Chief Ene... C/S LODES... Microsoft Po... Microsoft W... 10:27 AM

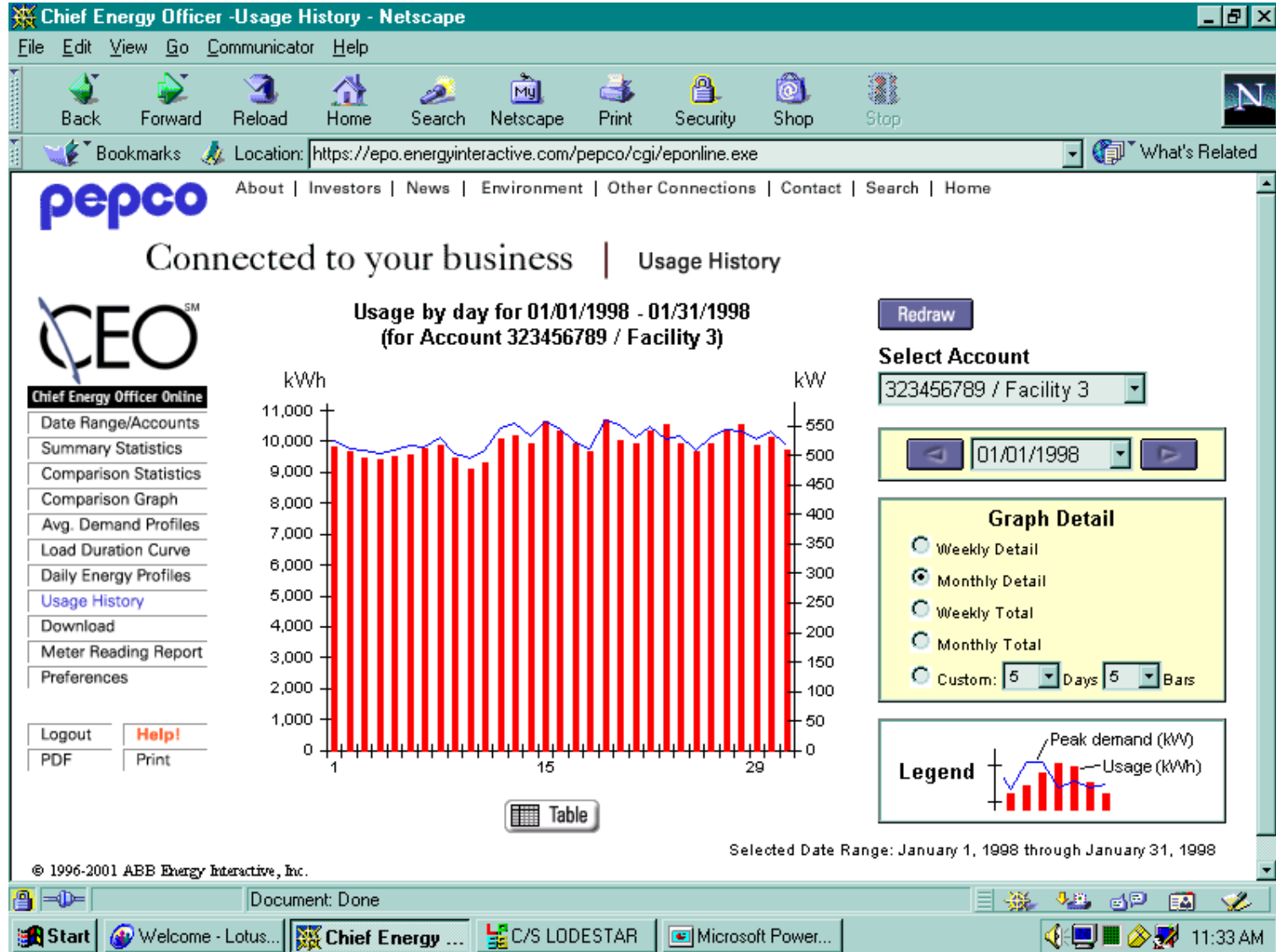
Produce Facility Comparisons



Create Average Demand Profiles



Daily or Weekly Usage History



Suppliers and the Billing Process

- Meter read on scheduled date
- Validated meter readings sent to Supplier the next day
- Supplier sends the bill-ready data within 3 business days
- Pepco sends bill to Customer. If supplier misses the billing window, Pepco sends bill without supplier charges

Commercial Billing Questions

- Dedicated group focused on Commercial accounts
 - Billing Inquiries
 - Account Analysis
 - Energy Consumption Information
 - Account Changes
 - Energy Efficiency Program Information

Contact Information

- Pepco Commercial Account Billing Support
 - Kast-south@pepco.com
 - 202-872-2040
- Automated Outage Reporting System
 - 877-pepco62
 - 877-737-2662
- Outage Maps
 - www.pepco.com/business/emergency/maps
- CEO Online
 - www.pepco.com/business/services/commercial/energy/

Energy Efficiency Programs

- Least cost method for saving energy is conservation and efficiency
- Four commercial and industrial energy efficiency incentive programs
 - Prescriptive Rebate Program
 - HVAC Rebate Program
 - Custom Incentive Program
 - Operations and Maintenance Program